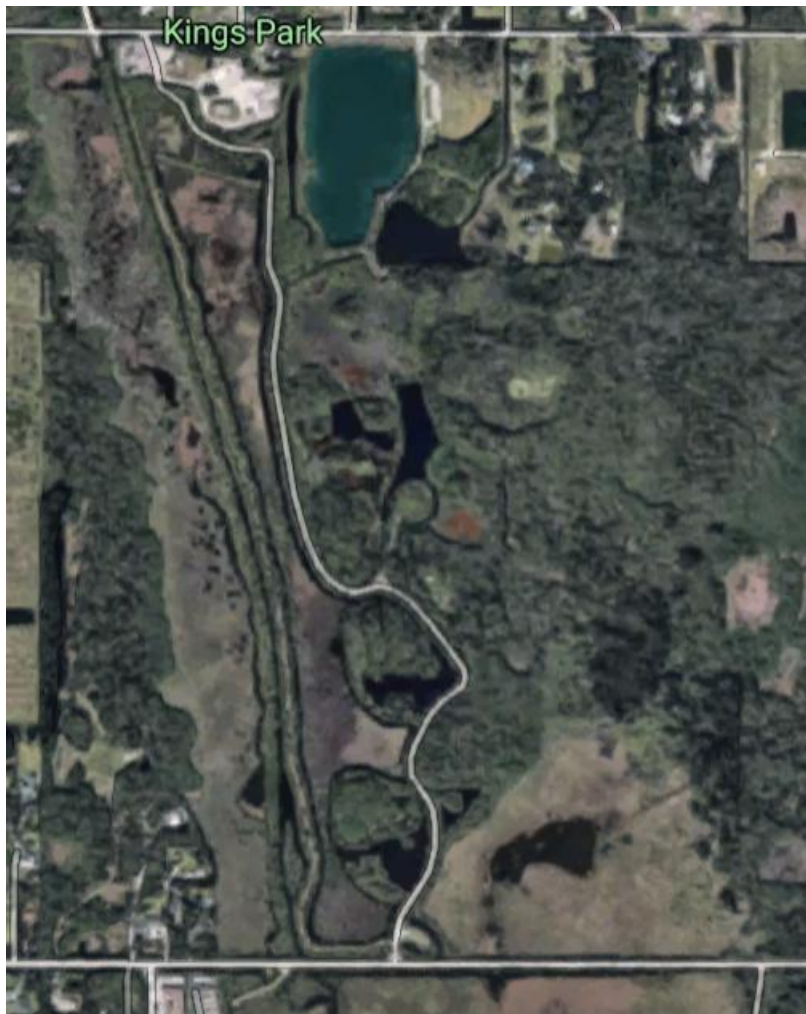


Kings Park

995 Chase Hammock Rd. Merritt Island Fl.



Kings Park

This 240-acre community river park is primarily a wetland preserve and haven for freshwater fishing. The small developed area at the northeast corner of the park features a multiuse field and paved parking that accommodates practice games and neighborhood play. A deep freshwater lake adjacent to the parking area offers a natural ramp for non-motorized boats. Another small lake, a canoe trail and rustic nature trails invite exploration for the adventurous.

Activities Include Wildlife Viewing, Picnic Area, Non Motorized Boating, Freshwater-Fishing, Hiking, Biking, Softball.

Open Dawn to Dusk